

leafy spring scarf



Leafy Spring Scarf

Designed by Miranda Jollie

Skill Level
Easy

Finished Size
Width: 9¼" (23.5cm) (at widest point)
Length: 65" (165cm)

Materials

- Willow Yarns™ Farmhouse Cotton (100% cotton; 100g/328yd) -730199-0014 Verdigris (2 balls)
- US size 4 (3.5mm) straight needles or size needed to obtain gauge

Gauge

22 sts x 30 rows = 4" (10.2cm) in pat
Save time, check your gauge.

Pattern Note

- When working into double yo on the WS, k into the front of the first lp and the back of the second.

ABBREVIATIONS

- BO:** bind off
- cm:** centimeter
- CO:** cast on
- k:** knit
- k2tog:** knit 2 stitches together
- lp:** loop
- p:** purl
- pat:** pattern
- rep:** repeat/repeats
- RS:** right side
- sl st:** slip stitch
- ssk:** slip, slip, knit these 2 stitches together—1 stitch decreased
- st/sts:** stitch/stitches
- WS:** wrong side
- yo:** yarn over

Instructions

CO 52 sts.

Work pat from written instructions or chart.

Row 1 (RS): K2, *(k2tog, yo) 3 times, (yo, ssk) 3 times; rep from * to last 2 sts, k2.

Row 2 and All WS Rows: K, working into double yo into the front of the first lp and the back of the second.

Row 3: K2, *k2tog, k3, yo, k2, yo, k3, ssk; rep from * to last 2 sts, k2.

Row 5: K2, *k2tog, k2, yo, k4, yo, k2, ssk; rep from * to last 2 sts, k2.

Row 7: K2, *k2tog, k1, yo, k6, yo, k1, ssk; rep from * to last 2 sts, k2.

Row 9: K2, *k2tog, yo, k8, yo, ssk; rep from * to last 2 sts, k2.

Row 11: K2, *yo, k4, ssk, k2tog, k4, yo; rep from * to last 2 sts, k2.

Row 13: K2, *k1, yo, k3, ssk, k2tog, k3, yo, k1; rep from * to last 2 sts, k2.

Row 15: K2, *k2, yo, k2, ssk, k2tog, k2, yo, k2; rep from * to last 2 sts, k2.

Row 17: K2, *k3, yo, k1, ssk, k2tog, k1, yo, k3; rep from * to last 2 sts, k2.

Row 19: K2, *k4, yo, ssk, k2tog, yo, k4; rep from * to last sts, k2.

Row 21: K2, *k2tog, k4, yo, yo, k4, ssk; rep from * to last 2 sts, k2.

Row 22: K.

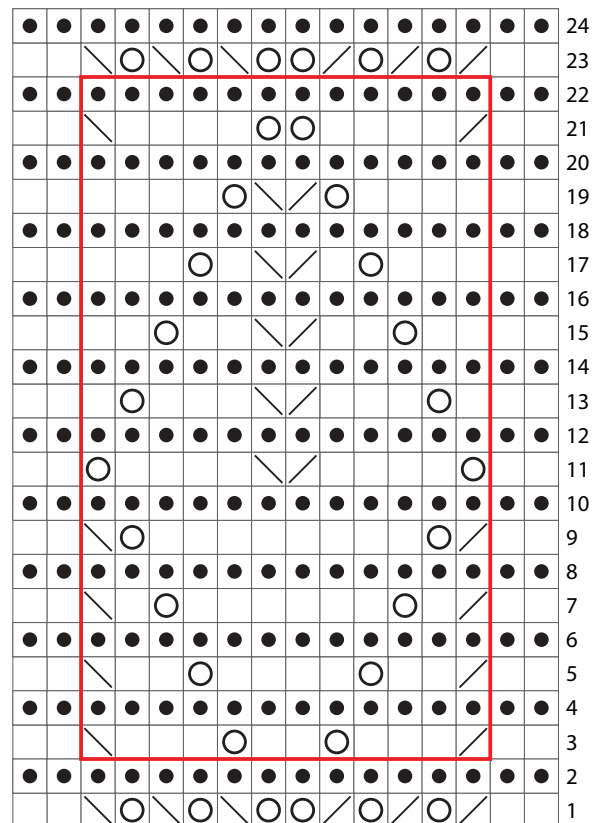
Rep Rows 3-22 twenty-five more times.

Rep Row 1.

BO on WS.

Finishing

Weave in ends and wet block scarf, pinning BO end to match shape of CO end, and pinning out the gentle scalloping on the edges.



Legend

- RS: K; WS: P
- RS: P; WS: K
- ⧘ K2tog
- ⧚ Ssk
- Yo
- Rep