

borealis cowl



borealis cowl

Designed by
Rae Blackledge

Skill Level


Intermediate

Finished Size

Width: 16" (41cm)

Circumference: 26" (66cm)

Materials

- Willow Yarns™ Stream 
(70% superwash wool/30% silk;
50g/437yd)
-732250-0019 Celestial (1 ball)
- US size 3 (3.25mm) 16" or 24" circular
needle or size needed to obtain gauge
- US size 11 (1mm) steel hook or hook
small enough to fit through bead
- Stitch markers
- Yarn needle
- 544 size 8 seed beads (approx 20g)

Gauge

20 sts x 34 rows = 4" (10.2cm) in St st,
blocked

Save time, check your gauge.

Stitch Guide

beaded k2tog: K2tog, insert hook
through seed bead (bead will sit on
throat of hook), sl st just worked from
right needle onto hook, slide bead off
hook and onto base of st, sl st back
onto right needle.

beaded ssk: Ssk, insert hook through
seed bead (bead will sit on throat of
hook), sl st just worked from right needle
onto hook, slide bead off hook and onto
base of st, sl st back onto right needle.

lace setup:

Rnds 1, 4, 5, and 8: K.

Rnd 2: K2, beaded k2tog, yo twice,
beaded ssk, k2.

Rnd 3: K4, p1, k3.

Rnd 6: Beaded k2tog, yo twice, ssk,
k2tog, yo twice, beaded ssk.

Rnd 7: K2, p1, k3, p1, k1.

beaded lace:

Rnds 1, 4, 5, and 8: K.

Rnd 2: K2, beaded k2tog, *yo twice,
ssk, beaded k2tog, yo twice, beaded ssk,
k2tog; rep from * to last 4 sts, yo twice,
beaded ssk, k2.

Rnd 3: K4, *p1, k3; rep from * across.

Rnd 6: Beaded k2tog, yo twice, ssk,
*beaded k2tog, yo twice, ssk, k2tog,
yo twice, beaded ssk; rep from * to last
4 sts, k2tog, yo twice, beaded ssk.

Rnd 7: *K2, p1, k1; rep from * across.
Rep Rnds 1-8 for pat.

Pattern Note

- M are used to mark the beg and the end
of the lace section. These m will move
after each 8-row rep so that 8 additional
sts are worked in the beaded lace pat
until all sts are worked in lace.

Instructions

Loosely CO 128 sts. Pm and join to work in
the rnd, being careful not to twist work.

Edging

Rnd 1: P.

Rnd 2: *K2tog, yo; rep from * around.

Rnd 3: K.

Rnd 4: P.

Lace Setup

Rnd 1: K60, pm, work Row 1 of lace setup
over next 8 sts, pm, k to end.

Rnds 2-8: K to first m, work lace setup to
second m, k to end.

Beg Beaded Lace

Rnd 1: K to 4 sts before first m, pm, work
Row 1 of beaded lace to 4 sts past second m
(removing both m), pm, k to end.

Rnds 2-8: K to first m, work beaded lace to
second m, k to end.

Rep Rnds 1-8 of beaded lace 13 more times.

Rep Rnds 1-8 of beaded lace once more,
working beaded lace pat over all sts of rnd.

Edging

Rnd 1: P.

Rnd 2: *K2tog, yo; rep from * around.

Rnd 3: K.

Rnd 4: P.

BO all sts loosely.

Finishing

Weave in ends.

Block to open lace.

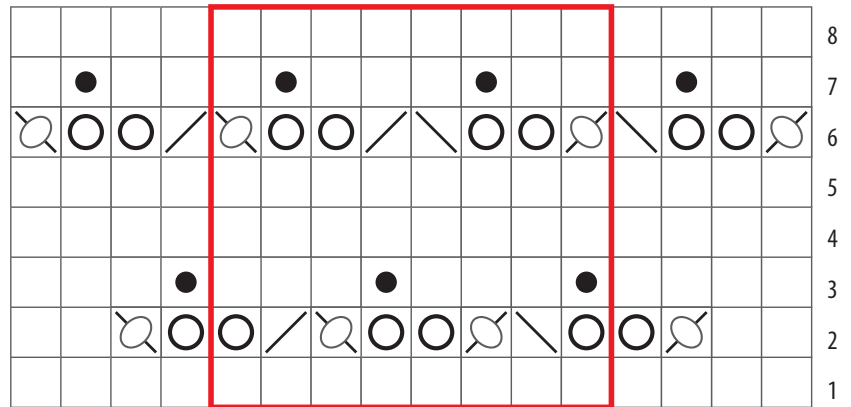
borealis cowl

Designed by
Rae Blackledge

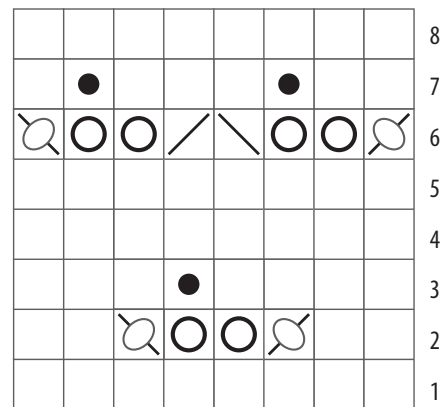
Legend

- K
- P
- Yo
- / K2tog
- \ Ssk
- ⌞ Beaded K2tog
- ⌟ Beaded Ssk
- Rep

Beaded Lace



Lace Setup



ABBREVIATIONS

- | | |
|--|---|
| beg: begin/beginning | rep: repeat/repeats |
| B0: bind off | rnd/rnds: round/rounds |
| cm: centimeter | sl: slip |
| C0: cast on | sl st: slip stitch |
| k: knit | ssk: slip, slip, knit these 2 stitches together—1 stitch decreased |
| k2tog: knit 2 stitches together | st/sts: stitch/stitches |
| m: marker | St st: stockinette stitch |
| p: purl | yo: yarn over |
| pat: pattern | |
| pm: place marker | |