

daisy filet throw


Skill Level

Intermediate

Finished Size

Approx 54" x 67" (137cm x 170cm)

Materials

- Willow Yarns™ Wash  (100% anti-pill acrylic; 100g/110yd)
 - 732142-0032 Minty (7 balls): A
 - 732142-0007 Buttercup (5 balls): B
 - 732142-0024 Snow (4 balls): C
- US size H-8 (5mm) crochet hook or size needed to obtain gauge
- Yarn needle

Gauge

16 sts x 8 rows = 4" (10.2cm)

Save time, check your gauge.

Stitch Guide

shell: (Dc, ch 1, dc, ch 1, dc) in designated st.

reverse sc: Work sc from left to right.



Instructions

With A, ch 205.

Row 1 (RS): Dc in fourth ch from hook and in each ch across. Turn—203 dc, counting beg ch 3 as 1 dc.

Rows 2: Ch 4 (counts as 1 dc and 1 ch 1), sk next st, dc in next st, *ch 1, sk next st, dc in next st; rep from * across. Turn—101 sps.

Row 3-4: Ch 4 (counts as 1 dc and 1 ch 1), sk next ch-1 sp, dc in next st, *ch 1, sk next ch-1 sp, dc in next st; rep from * across. Turn—101 sps.

Row 5: Ch 4, sk ch-1 sp, dc in next dc, (ch 1, dc in next dc) 6 times, (dc in next sp, dc in next dc) twice, (ch 1, dc in next dc) 3 times, (dc in next sp, dc in next dc) twice, *ch 1, (dc in next dc) 13 times, (dc in next sp,

dc in next dc) twice, (ch 1, dc in next dc) 3 times, (dc in next sp, dc in next dc) twice*; rep from * to * 3 times, (ch 1, dc in next dc) 6 times, ch 1, dc in third ch of beg ch-4. Turn.

Row 6-23: Work from chart, changing to C in last st of Row 23.

Rows 24-26: Work from chart with C, changing to B in last st of Row 26.

Rows 27-49: Rep Rows 1-23 from chart with B, changing to C in last st of Row 49.

Rows 50-52: Rep Rows 24-26 from chart, changing to A in last st of Row 52.

Rows 53-75: Rep Rows 1-23 from chart with A, changing to C in last st of Row 75.

Rows 76-127: Rep Rows 24-75, changing to C in last st of Row 127. Turn.

daisy filet throw

Border

Rnd 1: Ch 4, sk next st, dc in next st, *ch 1, sk next st, dc in next st; rep from * across to last 2 sts, ch 1, sk next st, shell in corner st. Working across longer side, ch 1, dc at base of end st of same row, **ch 1, dc at base of end st of next row; rep from ** to base of end st of next-to-last row, ch 1, shell in corner st. Rep from * around rem 2 sides, end (dc, ch 1) twice in same st as beg ch 4; join with sl st to third ch of beg ch 4. Turn.

Rnd 2: Ch 3, dc in next ch-1 sp, 3 dc in corner dc, dc in each ch-1 sp and dc around, working 3 dc in each corner dc; join with sl st to top of beg ch 3. Do not turn.

Rnd 3: Ch 1, beg in same st as join and working reverse sc, work sc, *ch 1, sk next st to right of last sc, sc in next st; rep from * around. Join with sl st to first sc. Fasten off.

Fringe

Cut seven 14" (36cm) lengths of C for every other ch-1 sp on last rnd of border along the 2 short edges of afghan. Knot in place and trim evenly.

Legend

□ Space

-An open block is filled with a dc and a ch 1

■ Block

-A block with a black square is a filled block. A filled block is formed by 2 dc (1 worked in sp and 1 worked in next dc).

-If the filled block is over an open block, it is worked as follows: dc in next sp, dc in next dc.

-If the filled block is over another filled block, it is worked as follows: dc in each dc.

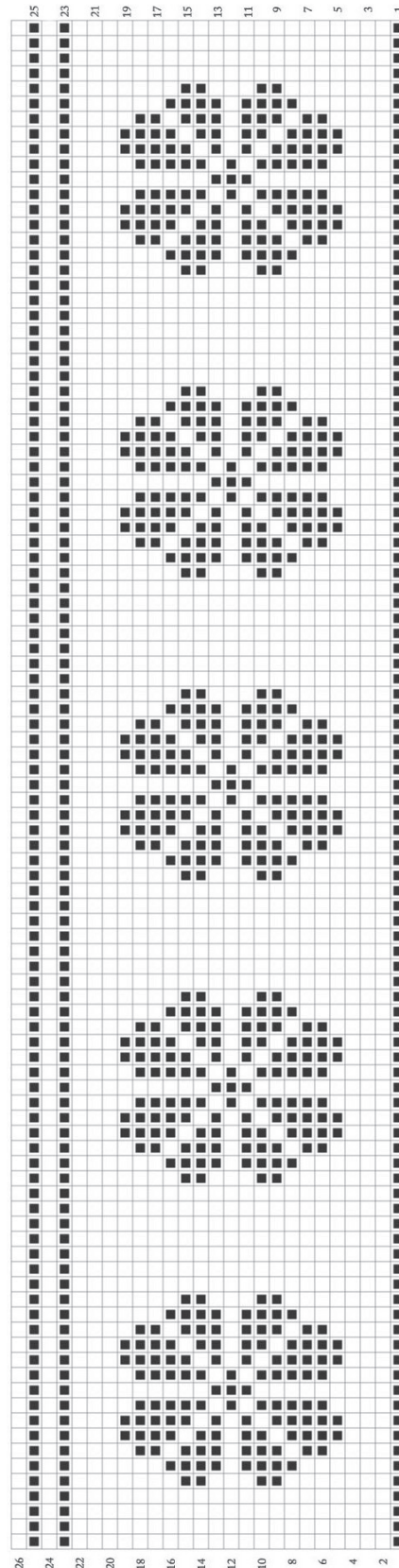


Chart Notes

- On RS rows, follow chart from right to left; on WS rows, follow chart from left to right.
- Each vertical line on chart represents on dc and each short horizontal line represents a ch 1.